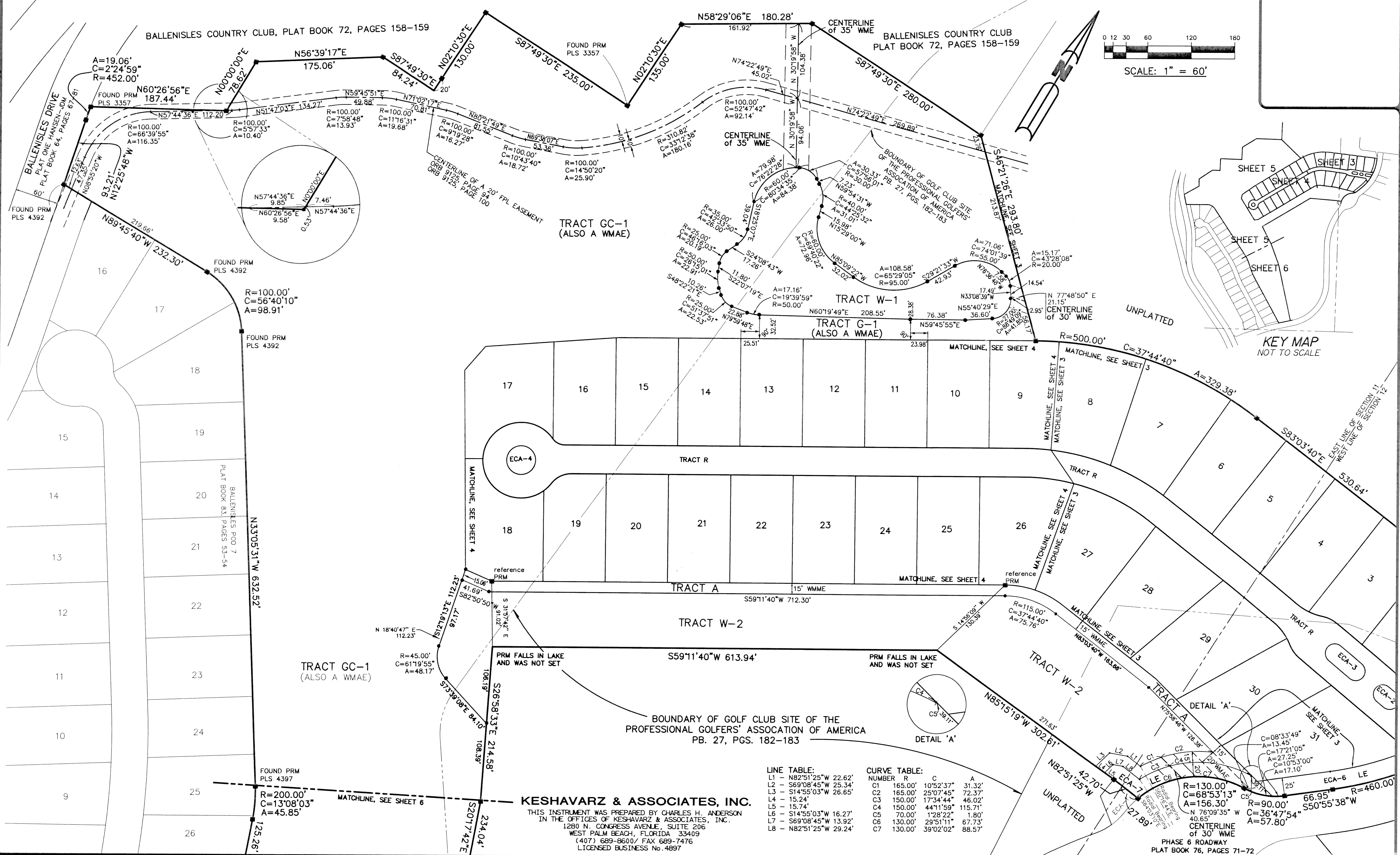
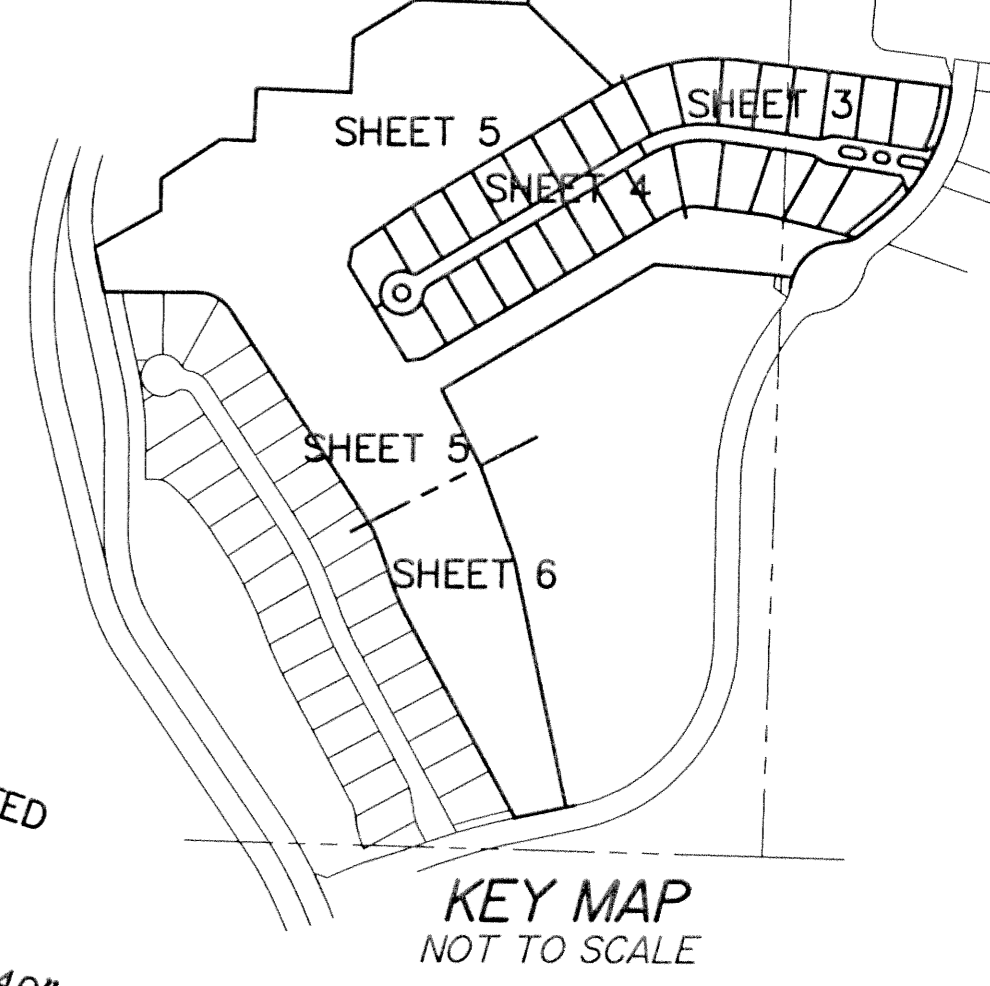
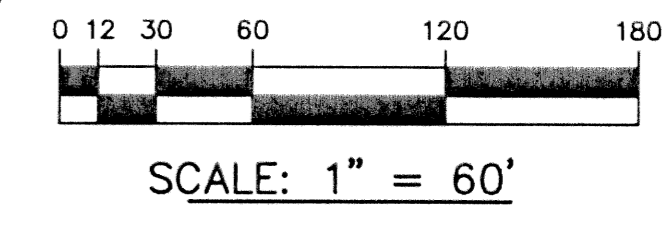


BALLENISLES Pod 8b

BEING A PORTION OF SECTIONS 11 AND 12, TOWNSHIP 42 SOUTH, RANGE 42 EAST, PALM BEACH COUNTY, FLORIDA, CITY OF PALM BEACH GARDENS AND A REPLAT OF A PORTION OF THE PLAT OF BOUNDARY OF GOLF CLUB SITE OF THE PROFESSIONAL GOLFERS' ASSOCIATION OF AMERICA, RECORDED IN PLAT BOOK 27, PAGES 182 AND 183, OF THE PUBLIC RECORDS OF PALM BEACH COUNTY, FLORIDA

SHEET 5 OF 6

NOVEMBER 1998



LINE TABLE:

L1	N82°51'25"W	22.62'
L2	S69°08'45"W	25.34'
L3	S14°55'03"W	26.65'
L4	S15.24'	
L5	S14°55'03"W	16.27'
L7	S69°08'45"W	13.92'
L8	N82°51'25"W	29.24'

CURVE TABLE:

NUMBER	R	C	A
C1	165.00'	10°52'37"	31.32'
C2	165.00'	25°07'45"	72.37'
C3	150.00'	17°34'44"	46.02'
C4	150.00'	44°11'59"	115.71'
C5	70.00'	1°28'22"	1.80'
C6	130.00'	29°51'11"	67.73'
C7	130.00'	39°02'02"	88.57'

KESHAVARZ & ASSOCIATES, INC.
 THIS INSTRUMENT WAS PREPARED BY CHARLES H. ANDERSON
 IN THE OFFICES OF KESHAVARZ & ASSOCIATES, INC.,
 1280 N. CONGRESS AVENUE, SUITE 206
 WEST PALM BEACH, FLORIDA 33409
 (407) 689-8600 / FAX 689-7476
 LICENSED BUSINESS No. 4897

PHASE 6 ROADWAY
 PLAT BOOK 76, PAGES 71-72